



Santa Rita Connection

Town of Sahuarita Mayor & Council Briefing

May 11, 2026

ARIZONA
86

Regional
Electric
Grid

ARIZONA
286

INTERSTATE
19

Tucson

Vail

INTERSTATE
10

Sahuarita

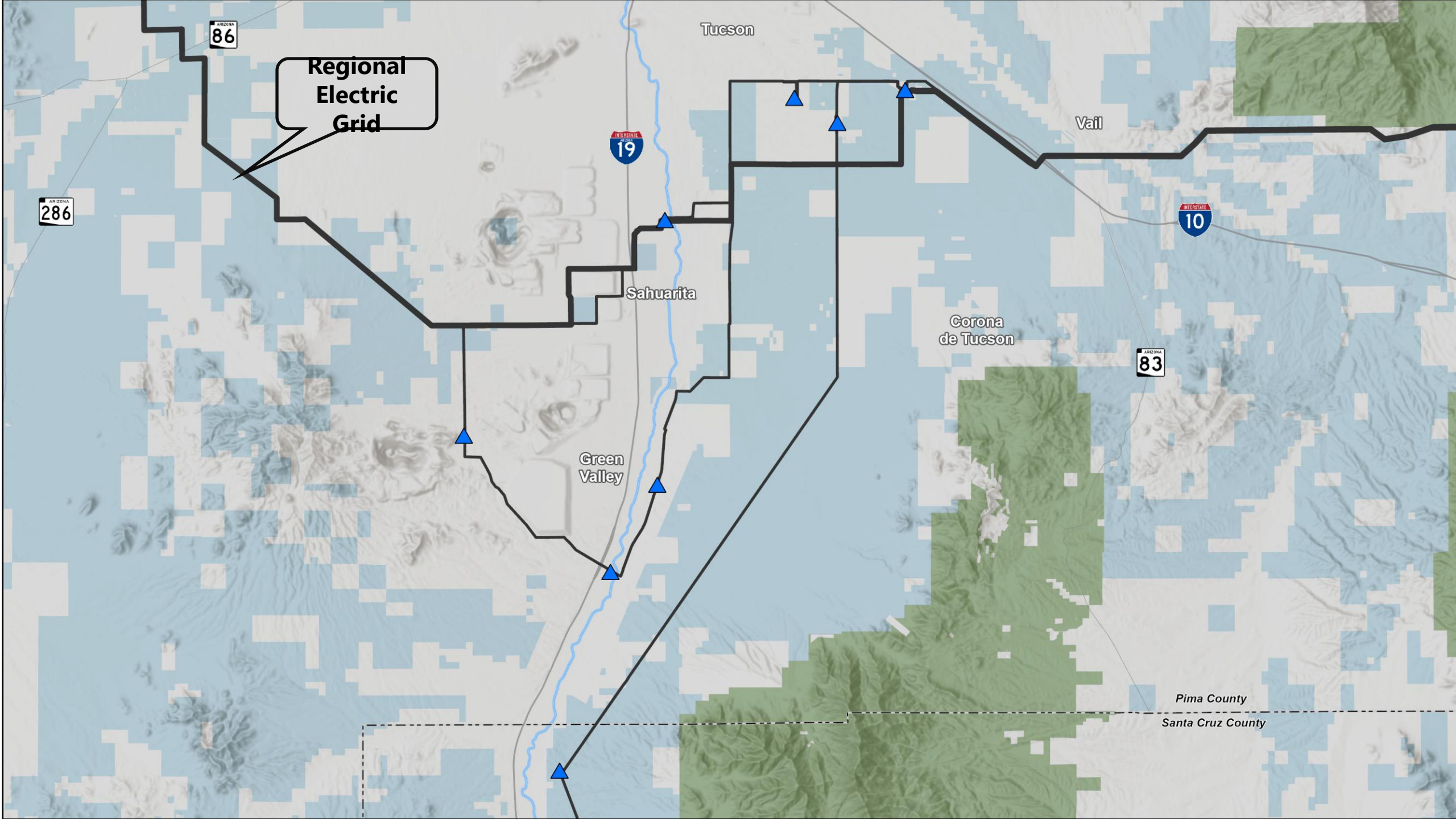
Corona
de Tucson

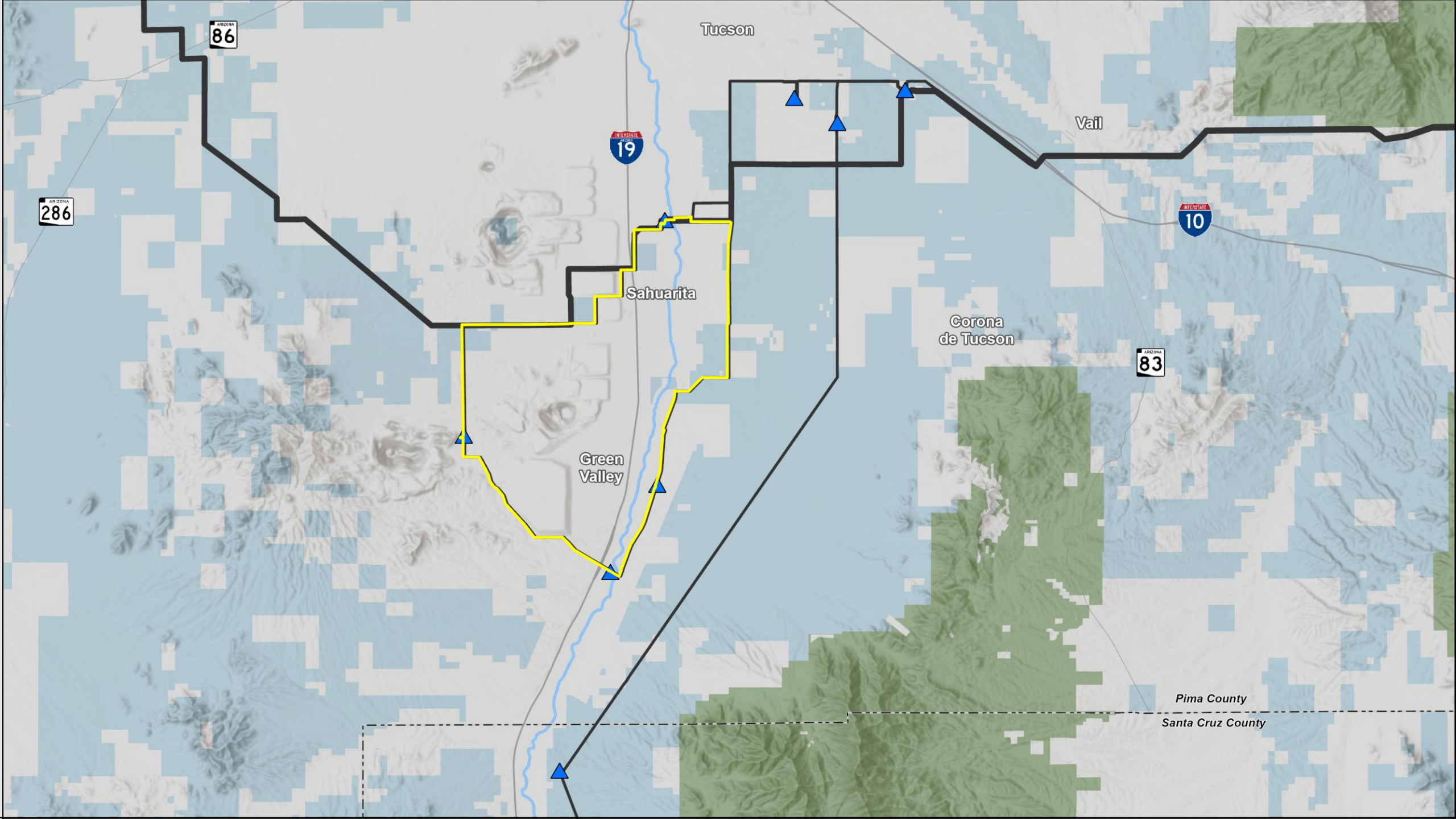
ARIZONA
83

Green
Valley

Pima County

Santa Cruz County





ARIZONA
86

ARIZONA
286

INTERSTATE
19

Tucson

Vail

INTERSTATE
10

Sahuarita

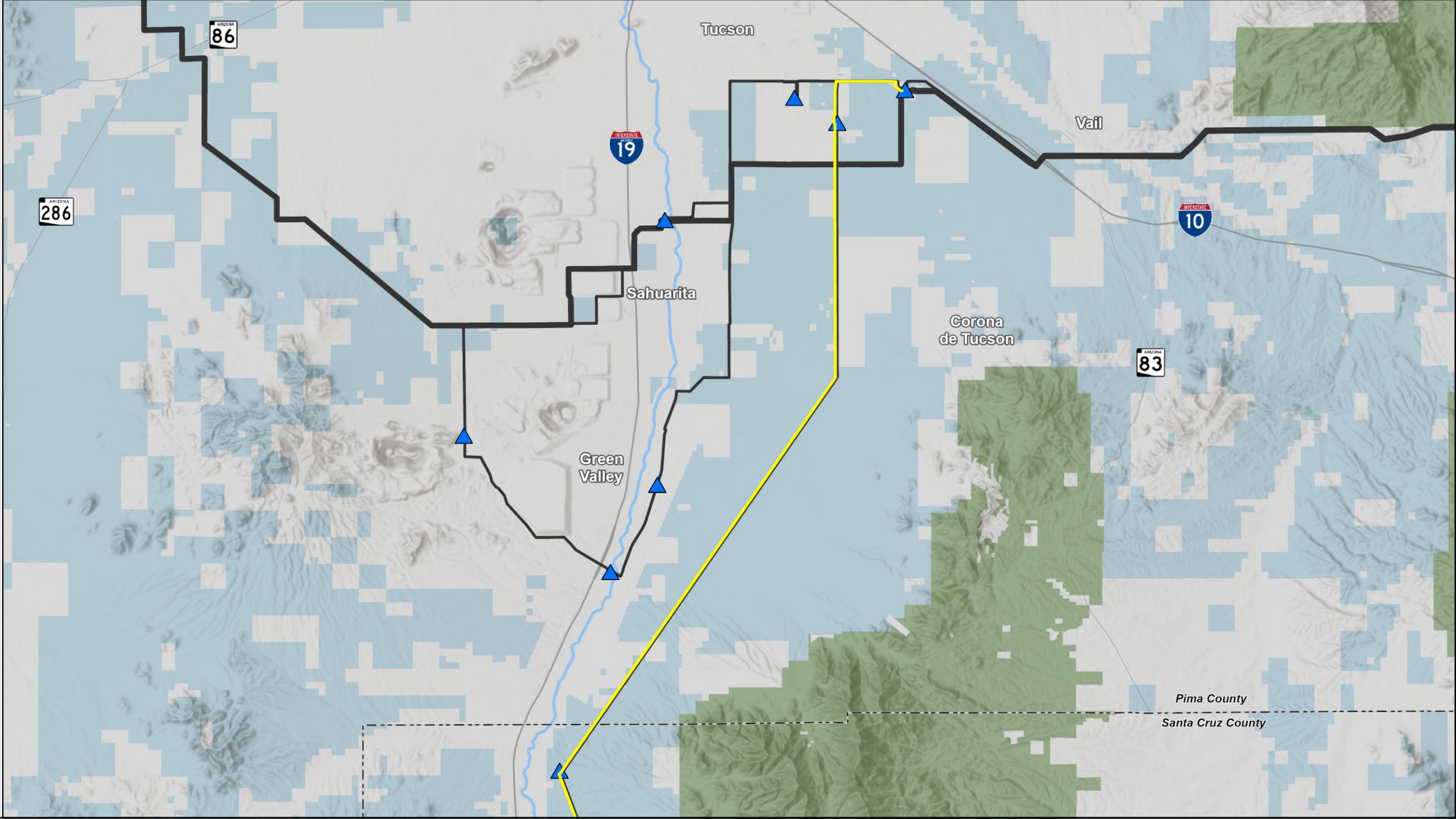
Corona
de Tucson

ARIZONA
83

Green
Valley

Pima County

Santa Cruz County



ARIZONA
86

ARIZONA
286

INTERSTATE
19

INTERSTATE
10

ARIZONA
83

Tucson

Vail

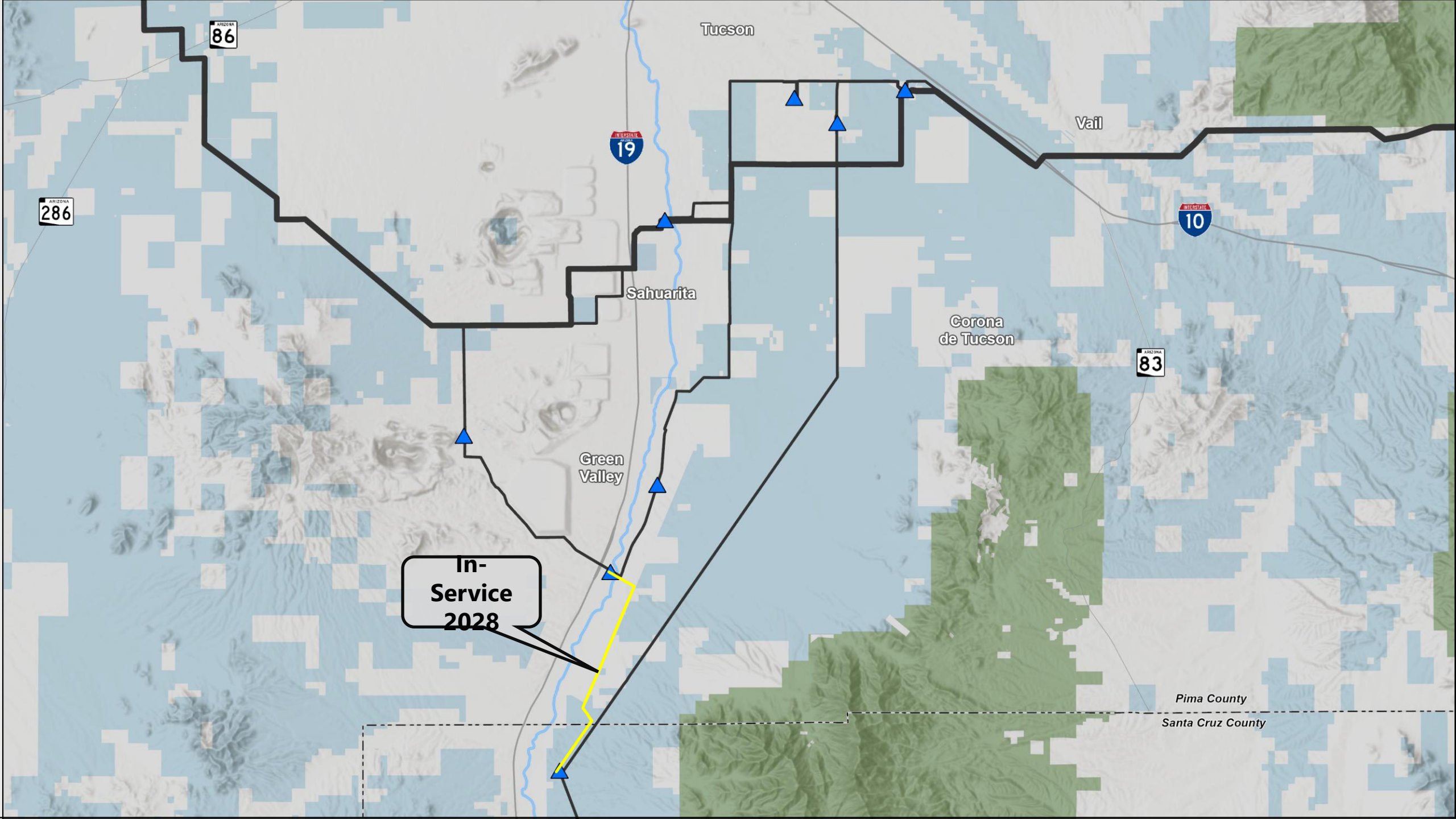
Sahuarita

Corona
de Tucson

Green
Valley

Pima County

Santa Cruz County



ARIZONA
86

ARIZONA
286

INTERSTATE
19

INTERSTATE
10

ARIZONA
83

Tucson

Vail

Sahuarita

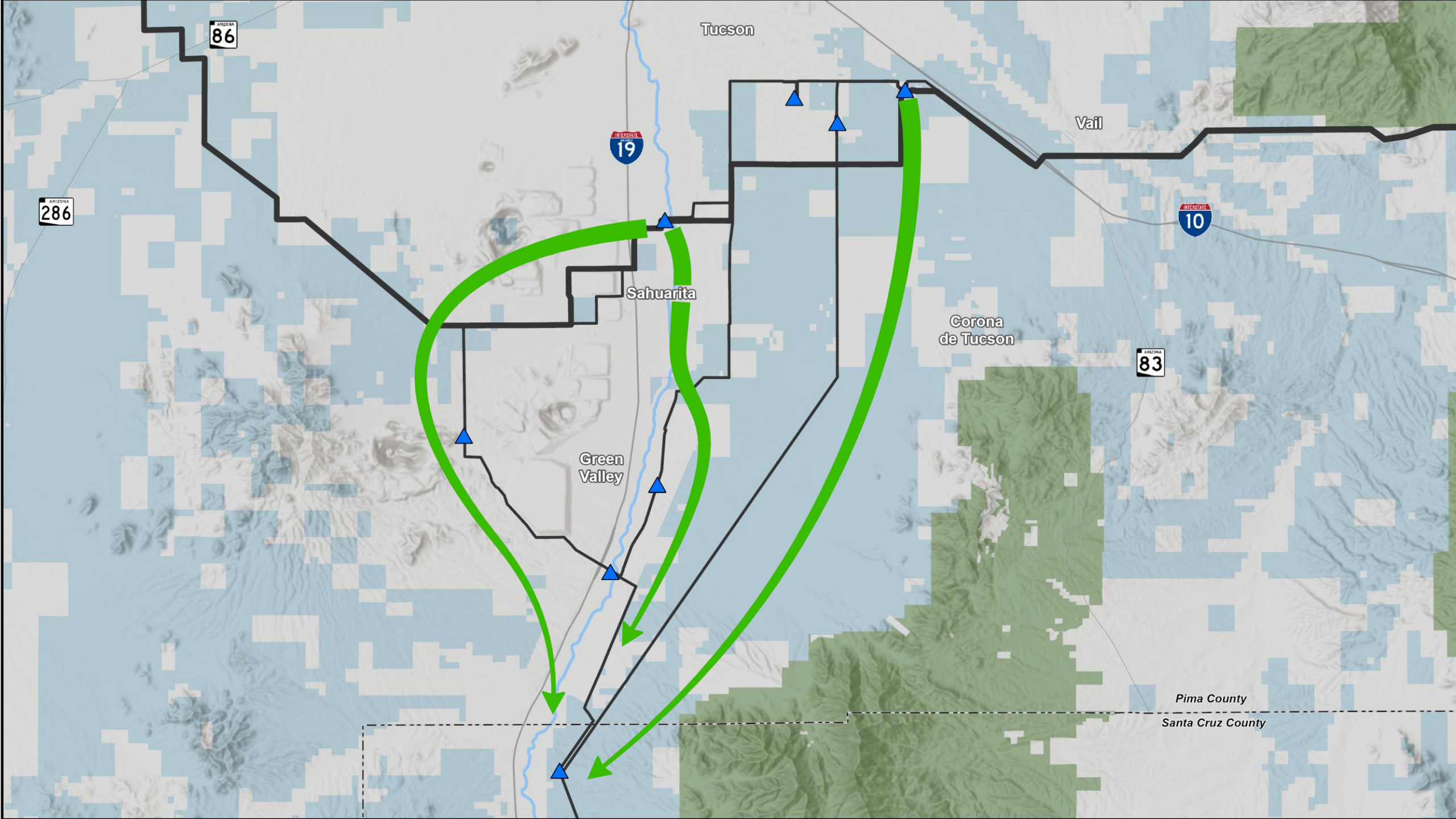
Corona
de Tucson

Green
Valley

**In-
Service
2028**

Pima County

Santa Cruz County



ARIZONA
86

ARIZONA
286

INTERSTATE
19

INTERSTATE
10

ARIZONA
83

Tucson

Vail

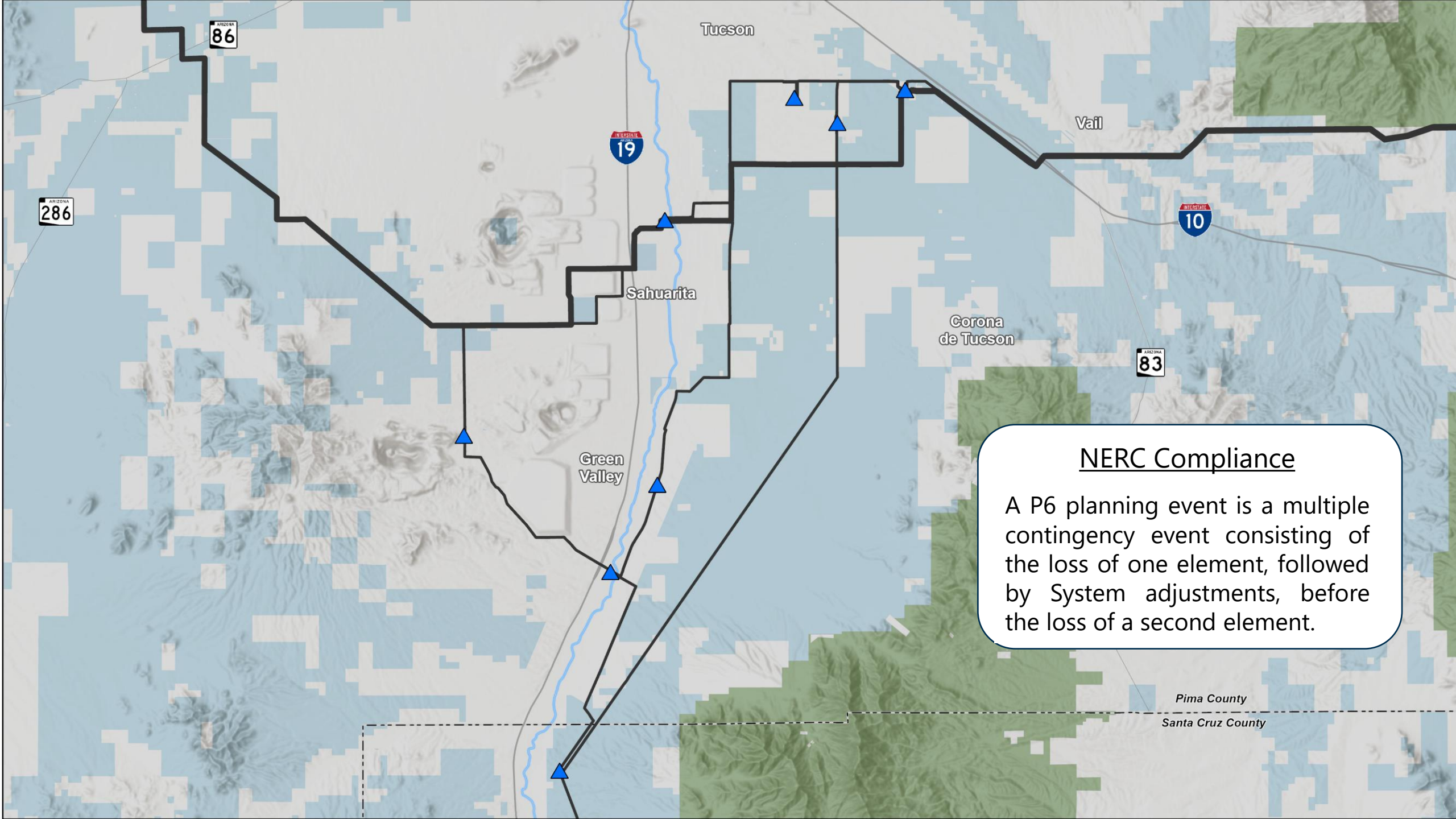
Sahuarita

Corona
de Tucson

Green
Valley

Pima County

Santa Cruz County

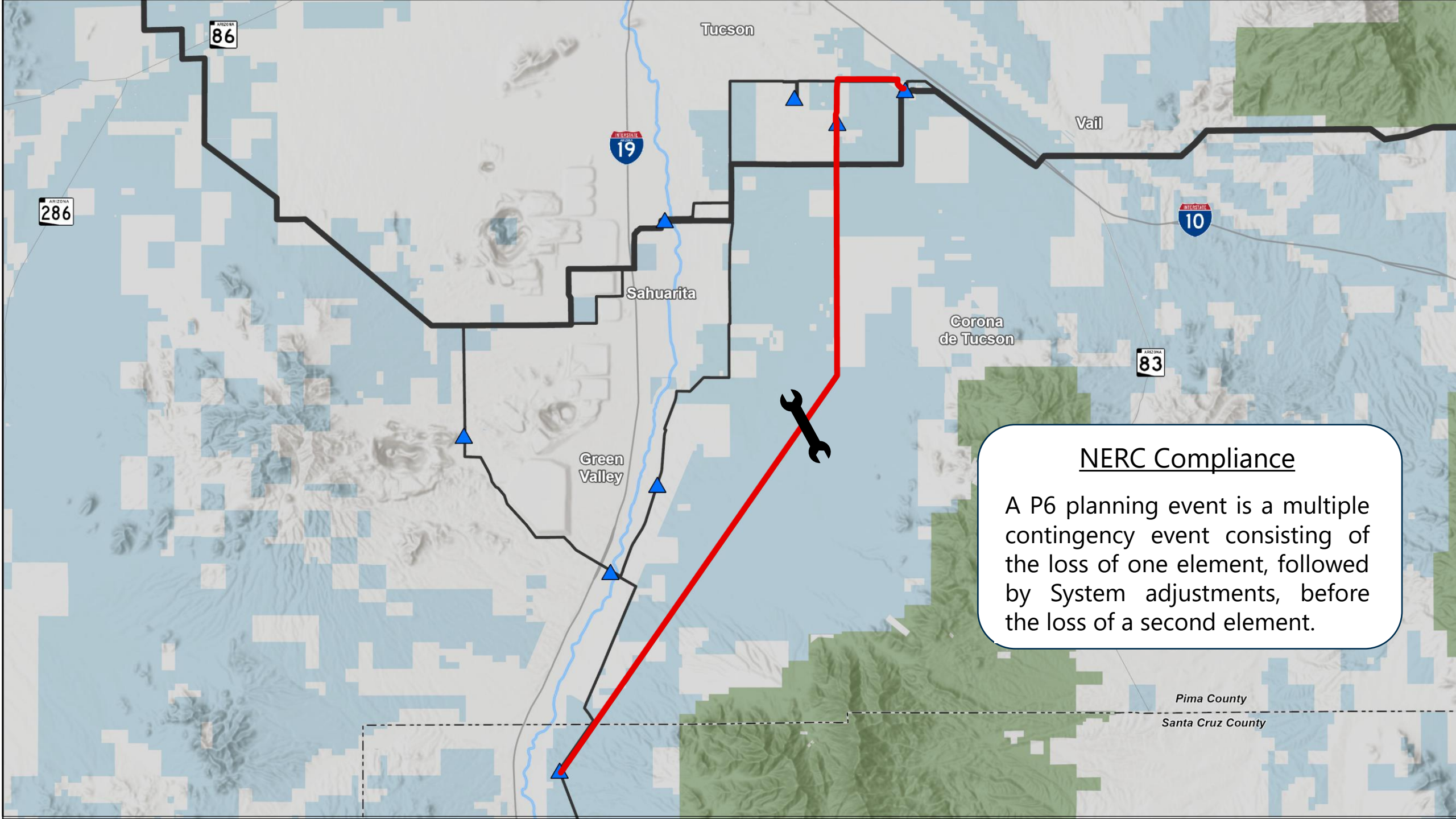


NERC Compliance

A P6 planning event is a multiple contingency event consisting of the loss of one element, followed by System adjustments, before the loss of a second element.

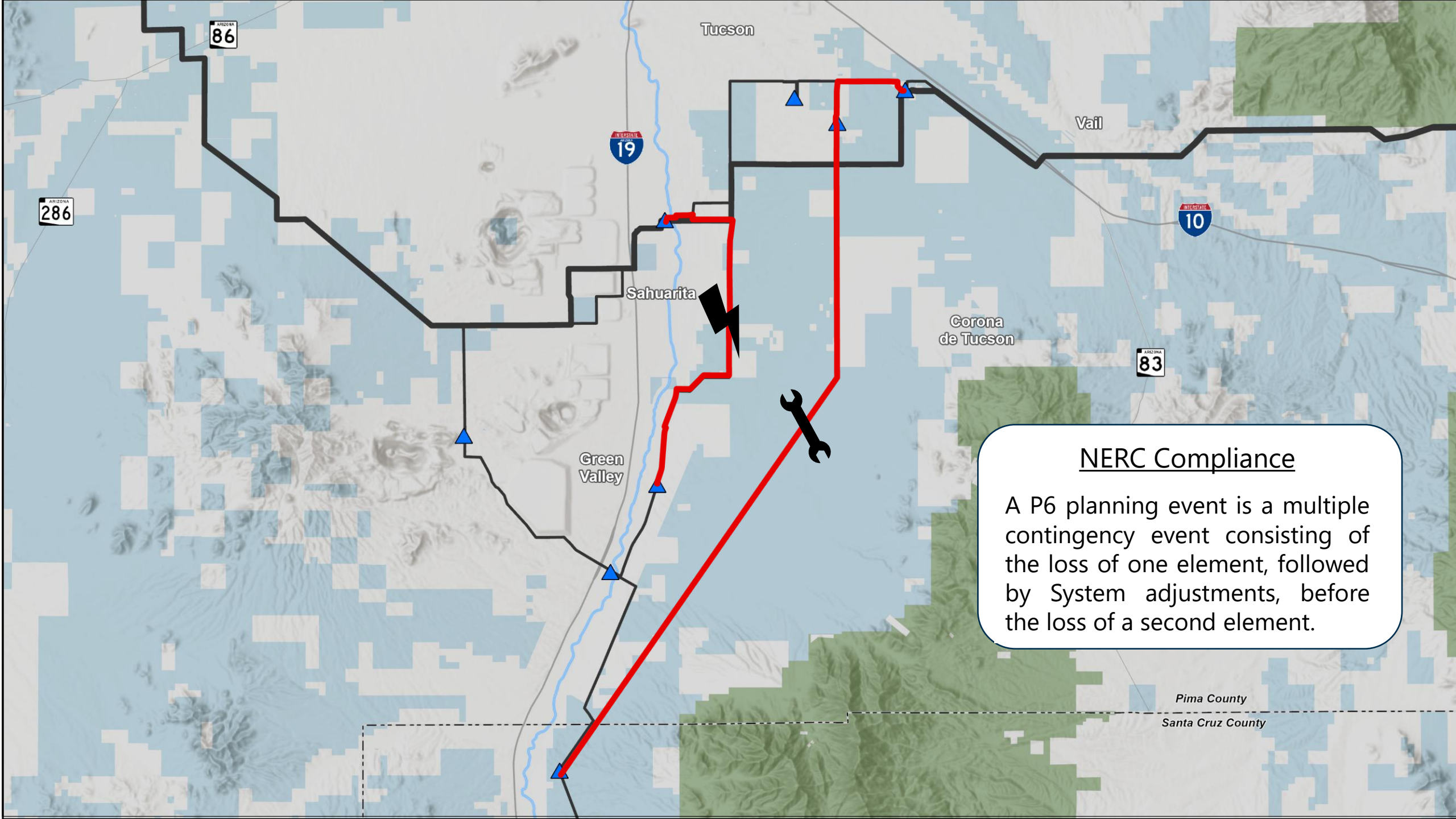
Pima County

Santa Cruz County



NERC Compliance

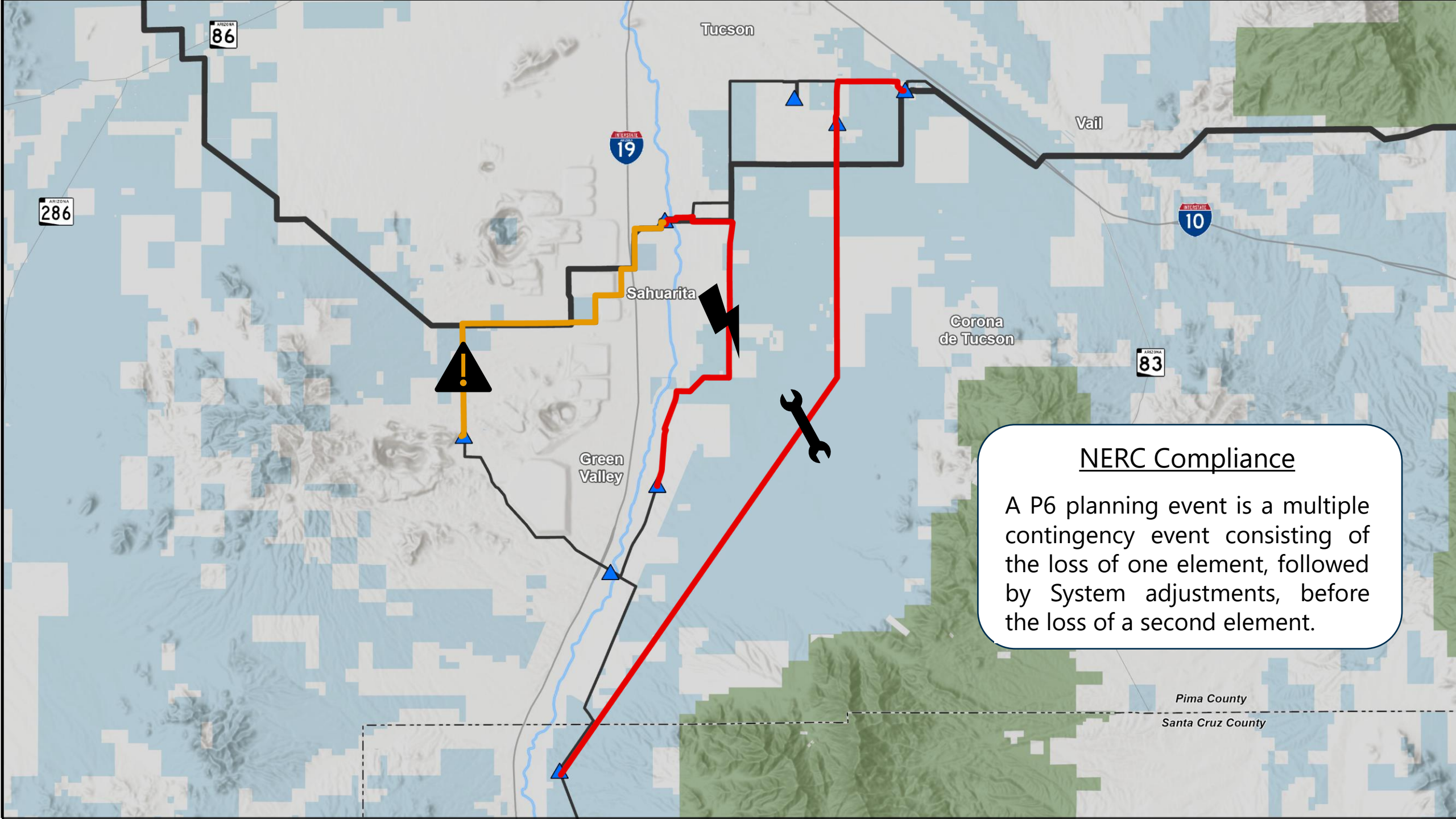
A P6 planning event is a multiple contingency event consisting of the loss of one element, followed by System adjustments, before the loss of a second element.



NERC Compliance

A P6 planning event is a multiple contingency event consisting of the loss of one element, followed by System adjustments, before the loss of a second element.

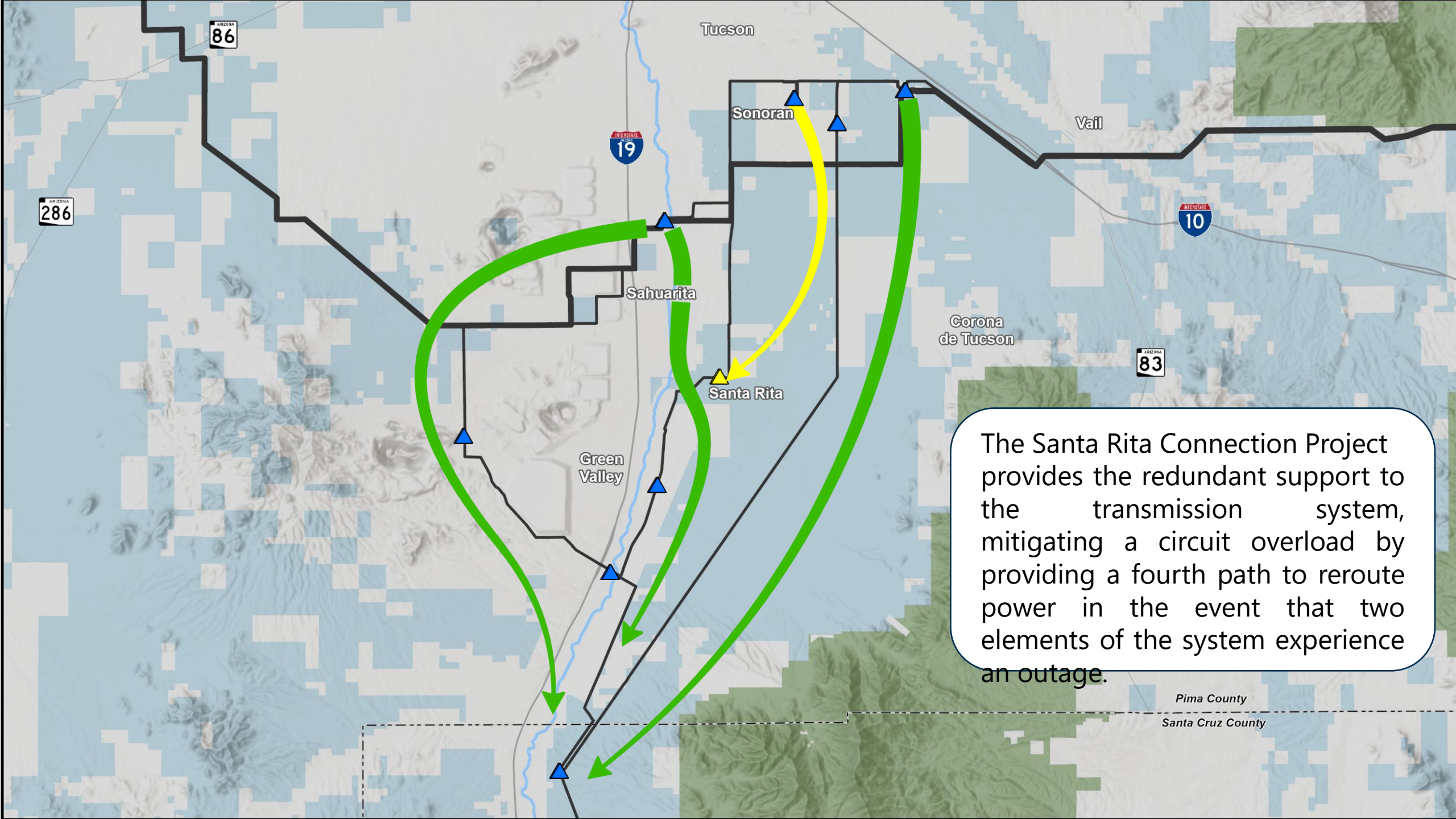
Pima County
Santa Cruz County



NERC Compliance

A P6 planning event is a multiple contingency event consisting of the loss of one element, followed by System adjustments, before the loss of a second element.

Pima County
Santa Cruz County



The Santa Rita Connection Project provides the redundant support to the transmission system, mitigating a circuit overload by providing a fourth path to reroute power in the event that two elements of the system experience an outage.

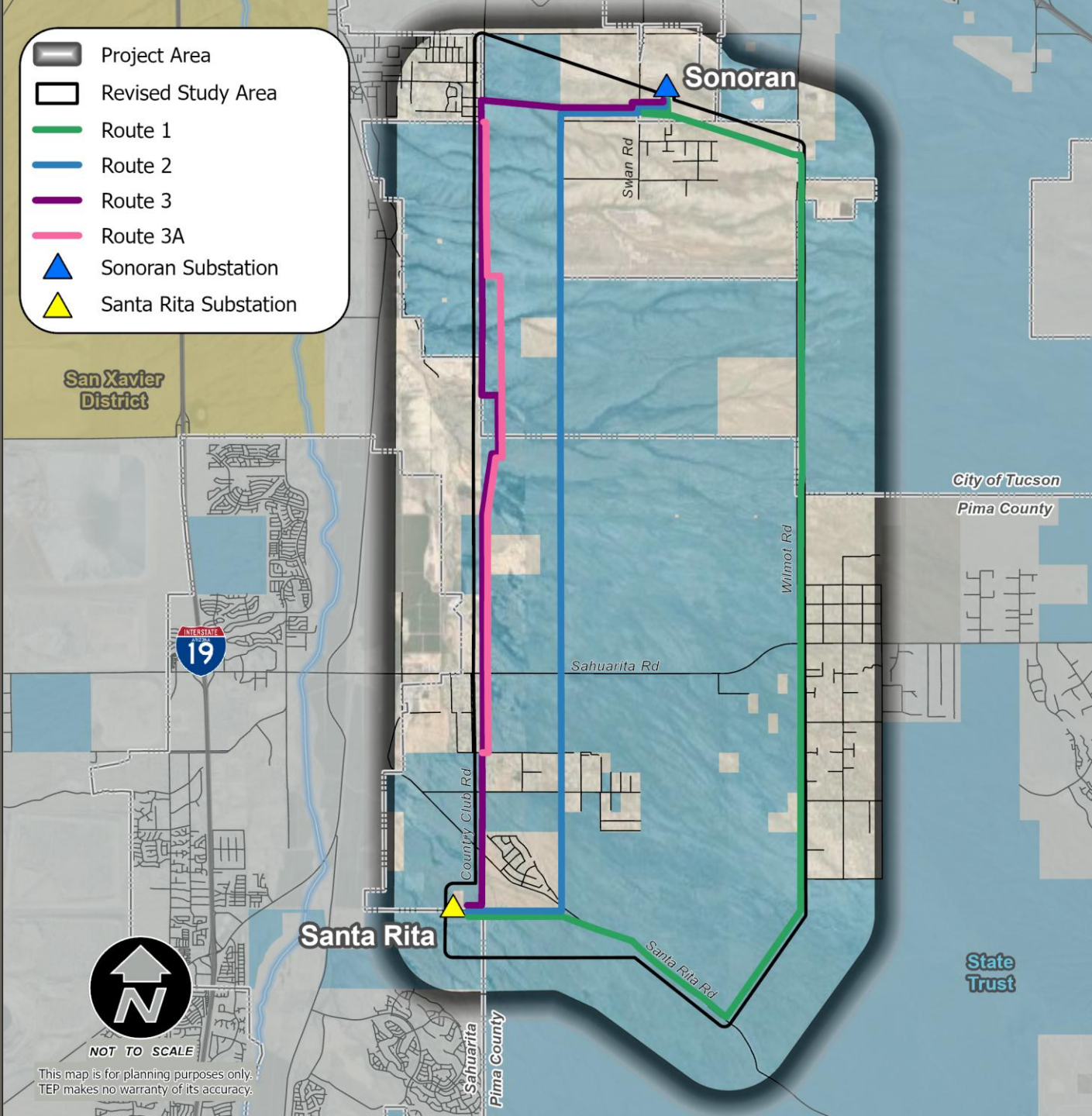
Pima County
Santa Cruz County

Compatibility Analysis

Phase
4

Alternative Route Selection

- 4 Alternative Routes
- 19 Refined Segments Eliminated



Concept Evaluation

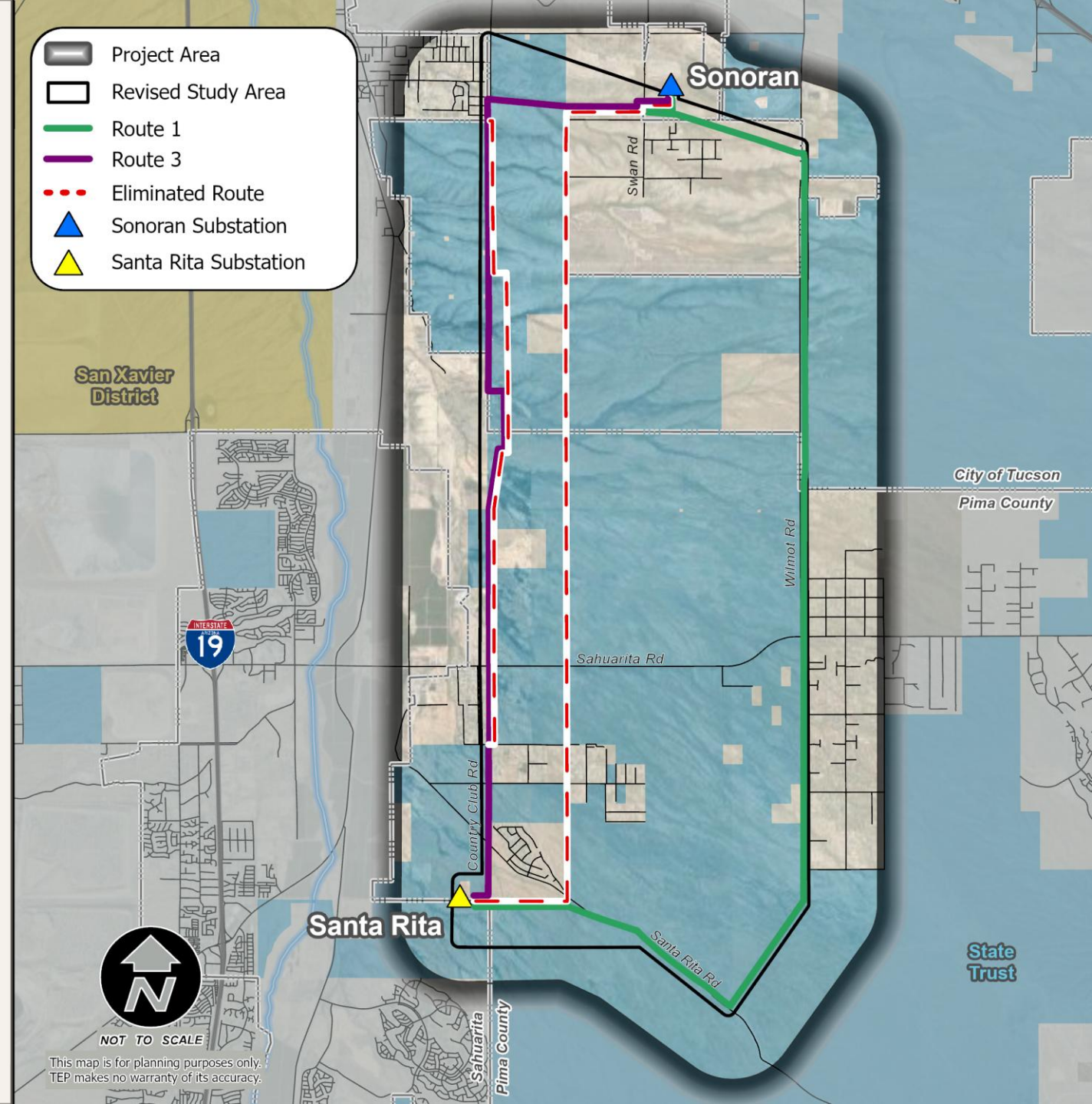
Phase
5

Route 1

- Lowest Cost
- Highest overall environmental compatibility
- Public Support

Route 3

- Primarily co-located on existing facilities
- Shortest distance
- No public opposition



Proposed Routes

Route 1

Length - 17.4 miles

Cost - \$16.5 Million

Land Ownership

- State Trust 60.5%
- Private – 39.5%

Jurisdictions

- Tucson – 21.6%
- Pima County – 77%
- Sahuarita – 1.4%

Route 3

Length - 13.3 miles

Cost - \$18 Million

Land Ownership

- State Trust - 86.3%
- Private – 13.7%

Jurisdictions

- Tucson – 52.7%
- Pima County – 45.8%
- Sahuarita – 1.5%

